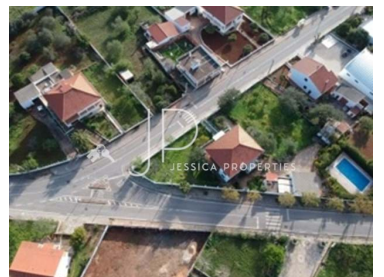




Loulé - Land with project



600

Area (m²)



1200

Land Area (m²)

180 000 €

(EUR €)

Urban land with project approved for construction of 3 townhouses with private pools

Urban land for construction with 1200 m².

Maximum construction area - 600 m².

Project fully approved by the Loulé Council for 3 townhouses with 175 m² of closed construction area each, plus terraces and private swimming pools.

Plot with small slope, all clean and fenced, adjoining the municipal street to the west.

Excellent solar exposure (East / West).

Water, domestic sewage, rainwater, electricity and telecommunications are infrastructures available in the surroundings of the plot.

Located in a charming inland village in the Algarve, just 40 km from Faro international airport, 20 km



Jessica

info@jessicaproPERTIES.com

T +351 913841179 (call to national mobile network) · T +351 282037224 (call to national landline) · E info@jessicaproPERTIES.com

¹ (Call to national fixed network) | ² (Call to national mobile network)



Scan the QR code to view the property

north of Loulé and 25 km from the tourist complex of Vilamoura, served by a good road network. Pharmacy, supermarkets, restaurants and accommodation either hotels or local accommodation, in addition to a gas station are some of the facilities present.

Property Features

- Views: Countryside views, Village view



Jessica

info@jessicaproperties.com

T +351 913841179 (call to national mobile network) · T +351 282037224 (call to national landline) · E info@jessicaproperties.com

¹ (Call to national fixed network) | ² (Call to national mobile network)